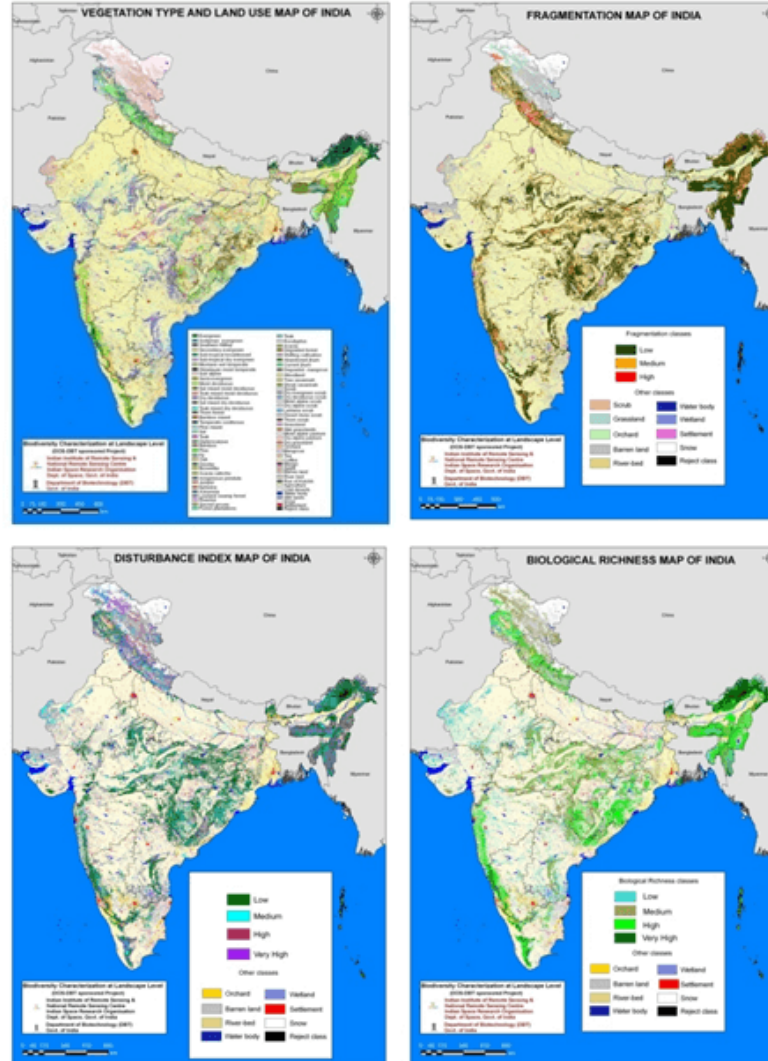


Biodiversity Characterization at Landscape Level in India using RS and GIS

- Characterize forest landscape for fragmentation, Disturbance and Biological Richness for conservation prioritization
- Characterize for new areas for PA network extension
- Databases for Bioprospecting
- Baseline data for biodiversity monitoring



Research Highlights

- ✓ National database: Project was carried out in 3 phases from 1998-2010 & databases were created region-wise. Prepared Seamless spatial database for proper monitoring and analysis across regions;
- ✓ ~16500 geocoded field sample points used for modeling biological richness and estimating the flowering plant diversity;
- ✓ The database is being used for conservation prioritization, preparation of DPR of green India project, input to climate change, species loss and monitoring biodiversity. Database provided to 11 state forest Dept., 6 research institutions & 4 NGOs;
- ✓ The database has been incorporated in Web based Biodiversity Information System (www.bisindia.org) for dissemination, analysis and queries by the scientific communities and policy makers.