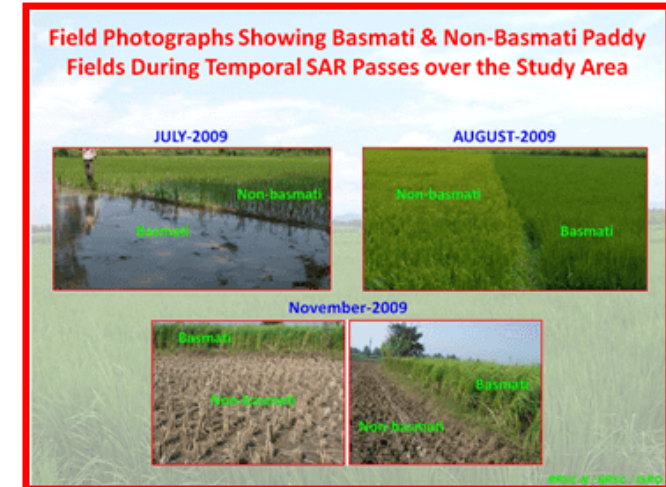
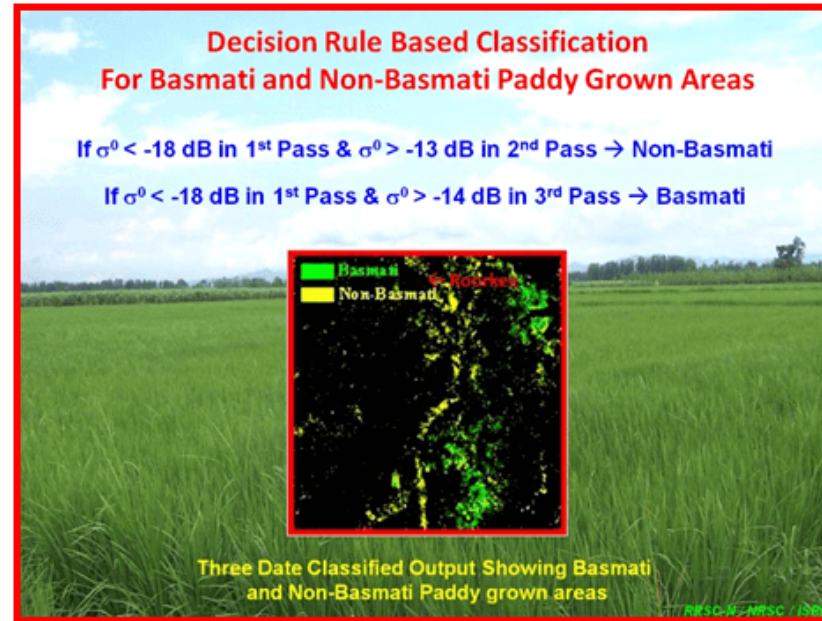
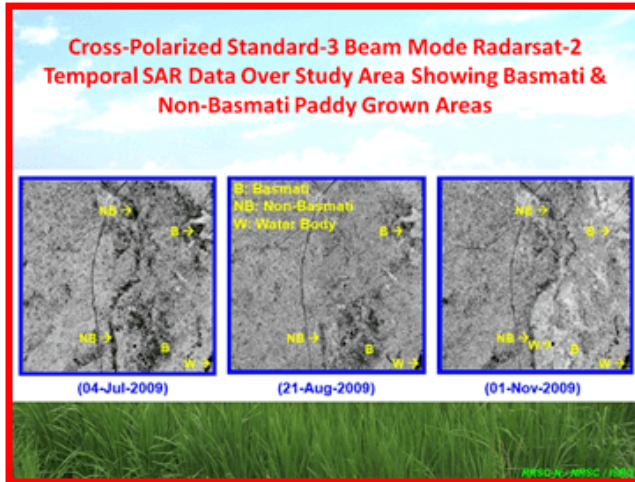


DISCRIMINATION OF BASMATI PADDY GROWN AREAS WITH NON-BASMATI PADDY GROWN AREAS USING TEMPORAL RADARSAT-2 SAR DATA



APPROACH

In this study cross-polarized temporal RADARSAT-2 SAR data has been successfully exploited for the discrimination of basmati paddy grown areas with non-basmati paddy grown areas over parts of Haridwar and Saharanpur districts. This has been achieved by capturing the shift between crop growth cycles of basmati and non-basmati paddy crops using decision rule based classification approach.