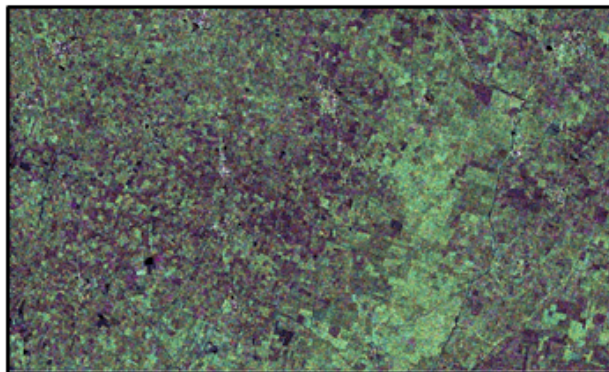
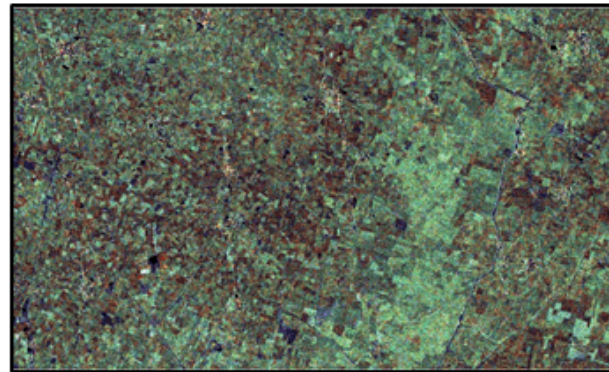


CROP DISCRIMINATION USING HYBRID POLARIMETRIC RISAT-1 SAR DATA

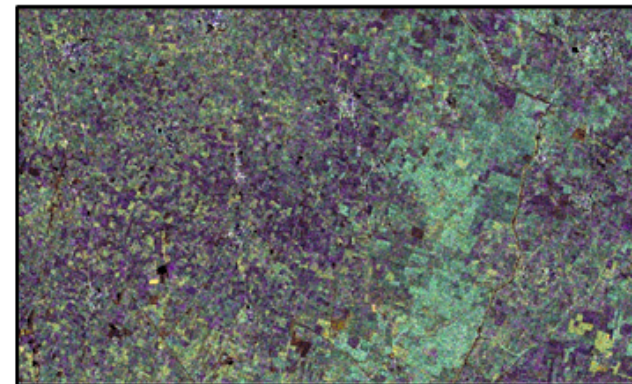
Color Composite
R: Even G: Volume B: Odd



m- δ

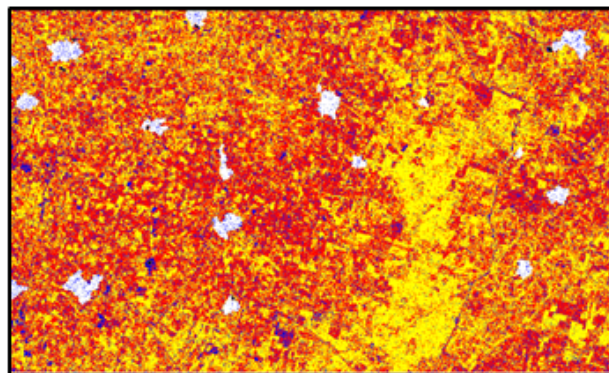


m- α

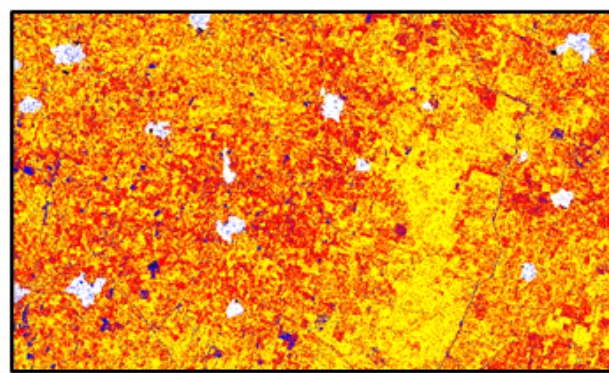


m- χ

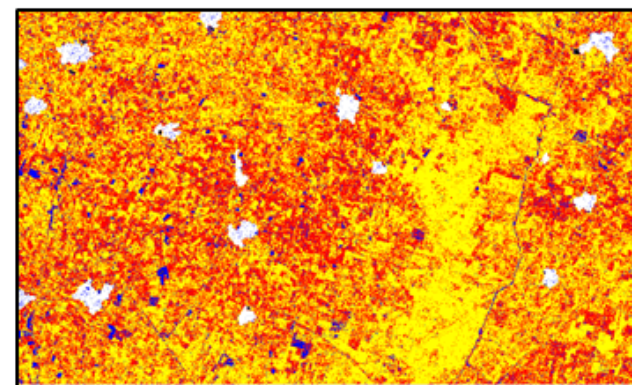
Classified Outputs



m- δ



m- α



m- χ

Overall Accuracy = 72.22%

Overall Accuracy = 77.50%

Overall Accuracy = 85.3%

Classes:  Mustard  Wheat  Bare  Waterbody  Built-up (Mask)