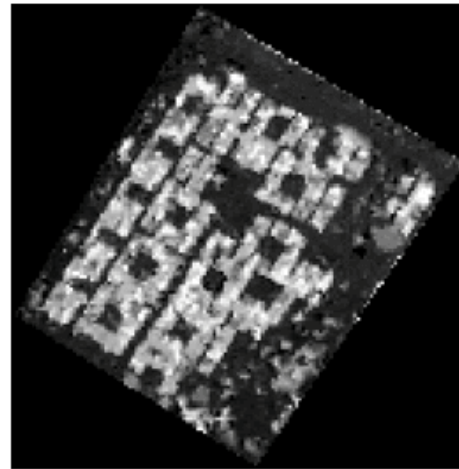
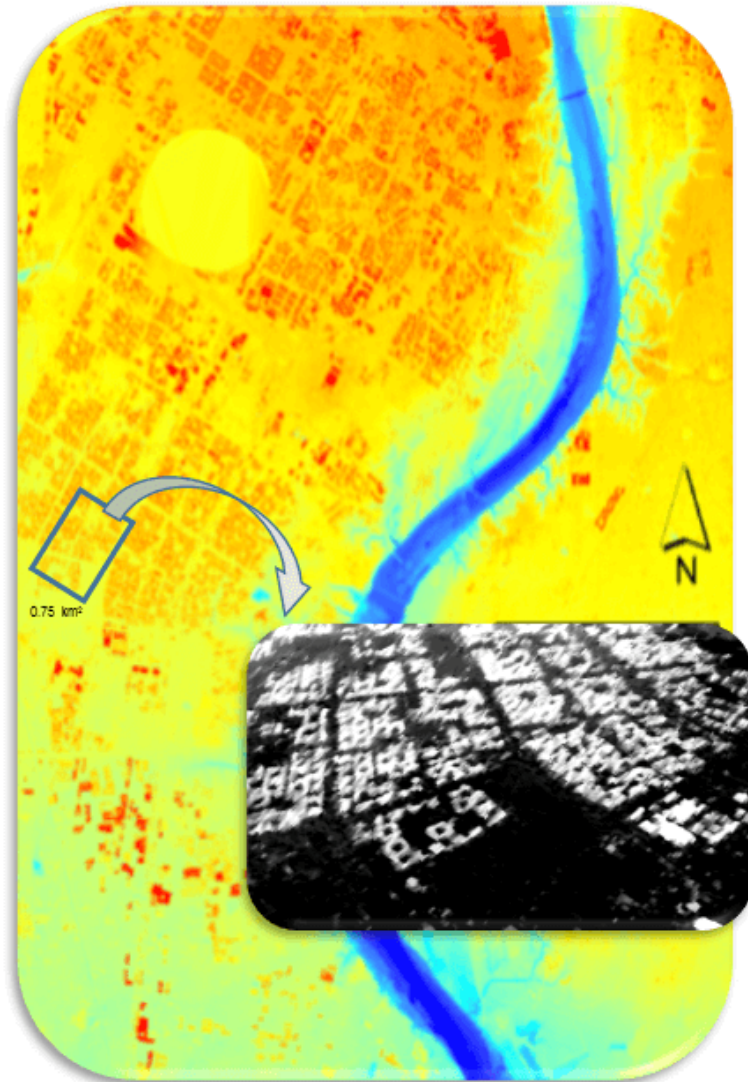
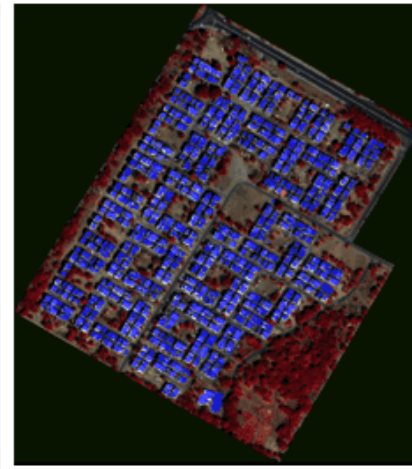


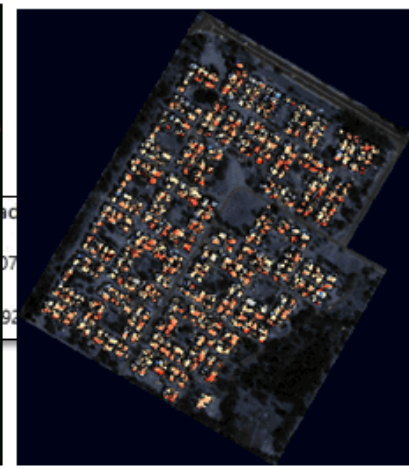
SOLAR ROOFTOP POTENTIAL ESTIMATION



DSM (2.5x2.5) of study area



Extracted Building Footprint



Global Radiation in WH/m²

- 0.53 m vertical accuracy of DSM taking 10 GCP's and 4 Check points
- Insolation is lowest in Dec with 2.4 kWh/m² and highest in July with 178 kWh/m² (only rooftops)
- Only 30% area of available roof top, 15% panel efficiency and 15% solar panel yield is considered while calculating energy

DSM 3D visualisation of study area in Arc Scene-Sector 3