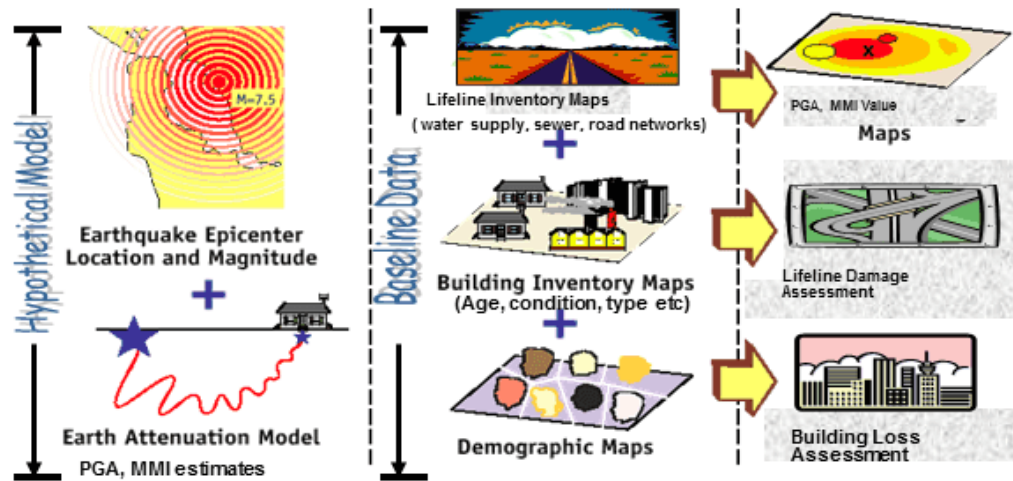


URBAN SEISMIC RISK ASSESSMENT

(Building vulnerability assessment using RS/ GIS in Dehradun city)

Approach / Methodology

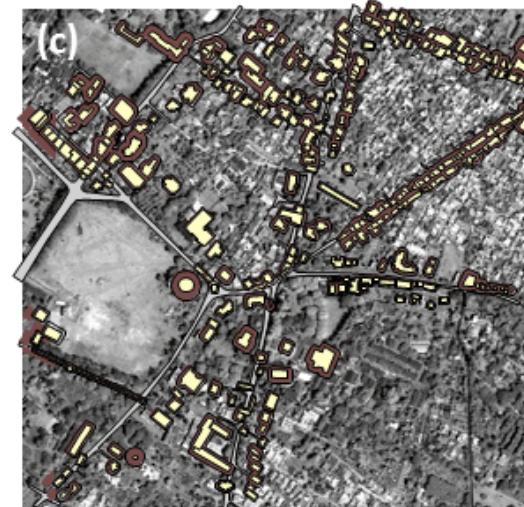
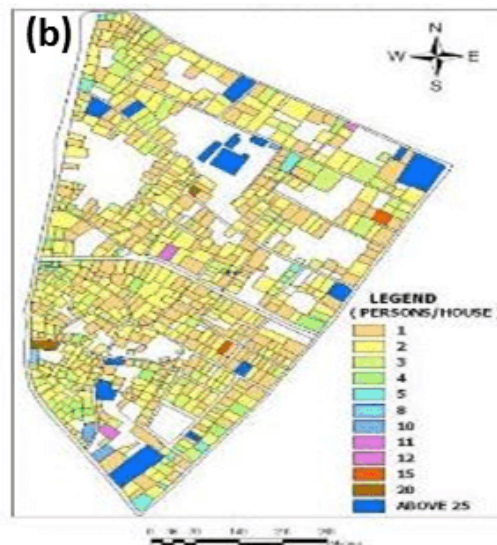
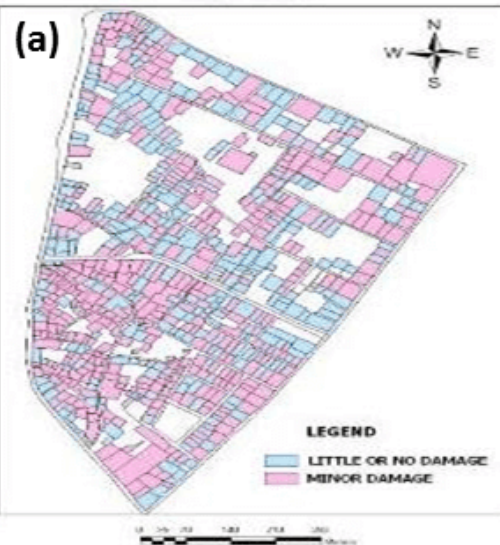


BUILDINGS HAVING ALL THE ASSETS AND WOULD TOTALLY COLLAPSE AT MMI - X AND XI



Data used: High resolution satellite and field data

Model parameters: Building footprint map, damage probability matrix based on building type, age, symmetry, maintenance level, simulated seismic intensity (MMI)



Buildings (Yellow)
Affected area (Brown)
Roads (Grey)

(a) Building vulnerability assessment (b) Population at risk (c) Roads blocked during seismic activity