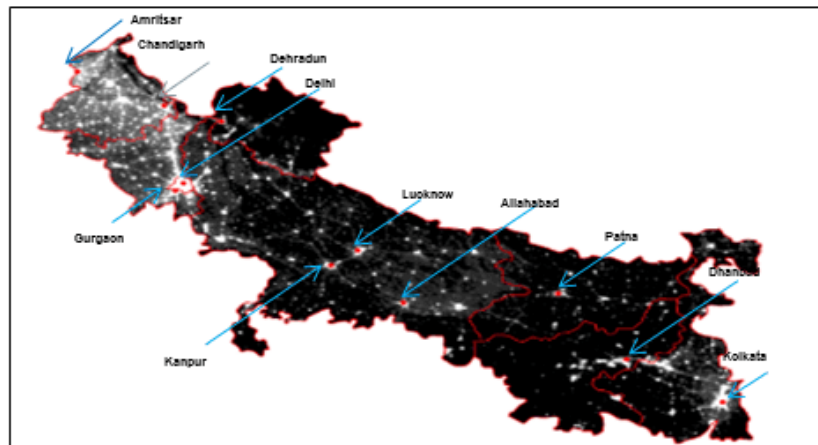
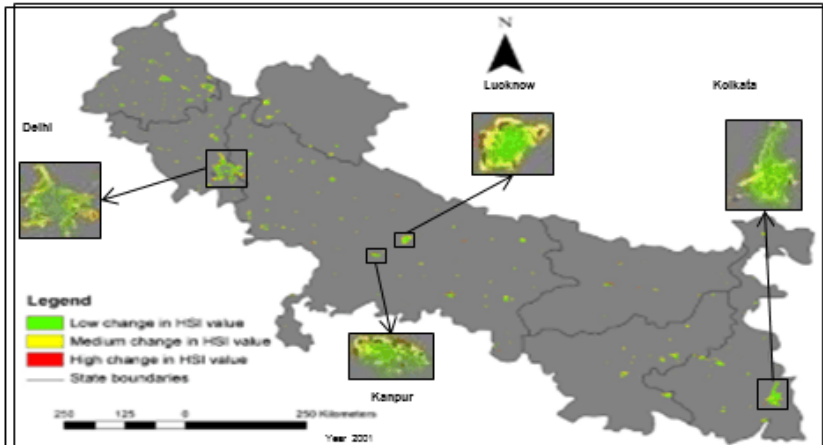


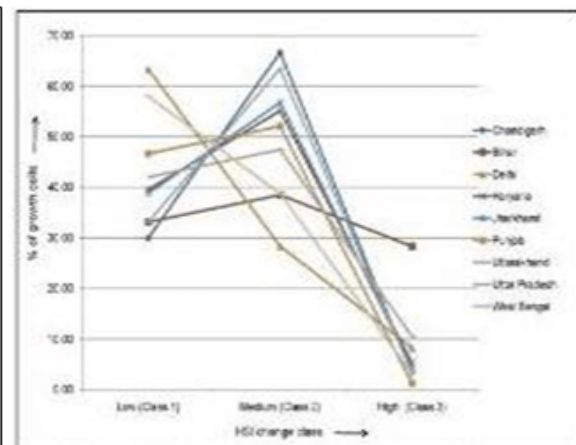
# NIGHT TIME OLS DATA APPLICATIONS FOR URBAN STUDIES



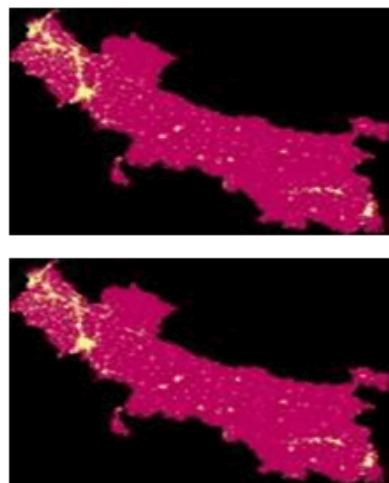
Night time OLS stable lights yearly composite



Spatial distribution of Human Settlement Index (HSI)

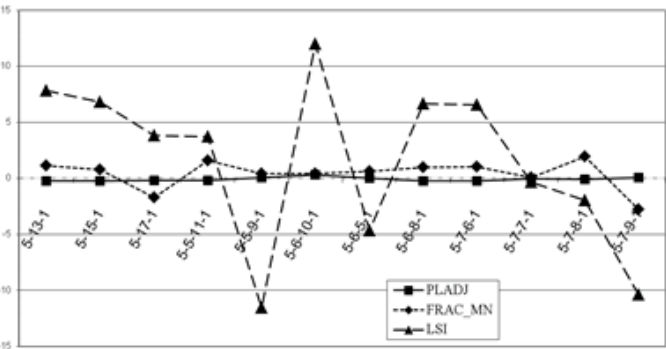


State wise analysis of HSI

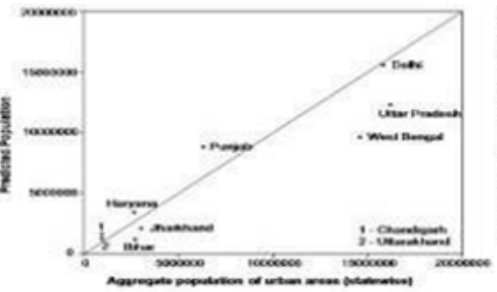


Simulated Urban Growth, 2008

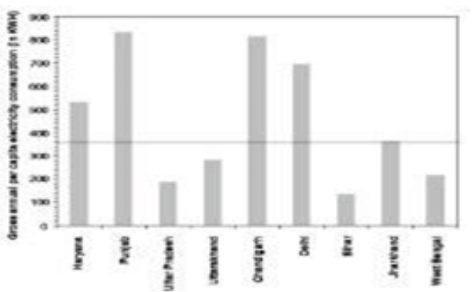
Actual Urban Growth, 2008



% difference between three spatial metrics calculated for actual and simulated urban growth maps for year 2008



Population estimation



Gross annual per capita electricity consumption

National average gross annual per capita electricity consumption is 360.97 KWH

- Use of DMSP-OLS stable lights data as a spatial proxy for variables such as population, economic activity at regional level.
- OLS data derived Human settlement index (HSI) indicates that some states like Delhi and West Bengal are undergoing densification process while Uttarakhand and Jharkhand are experiencing urban sprawl.