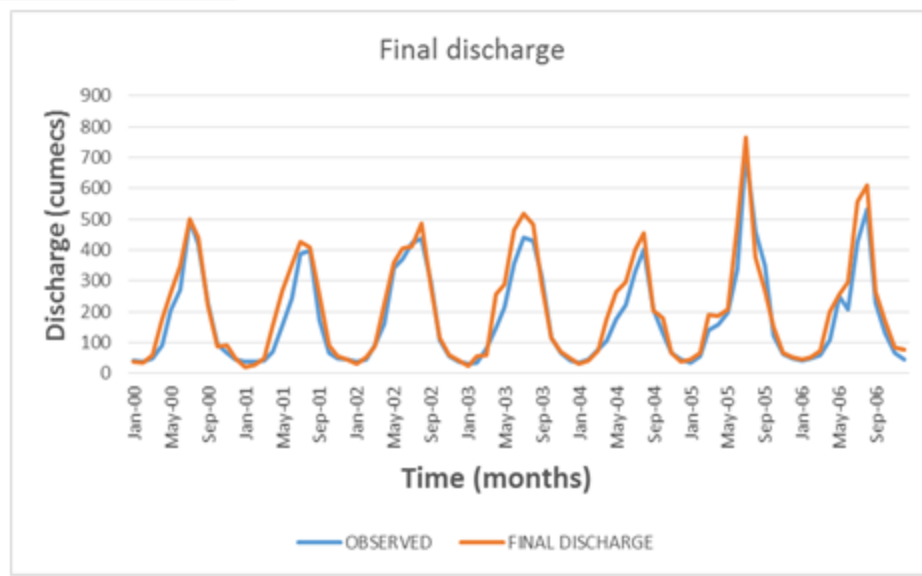
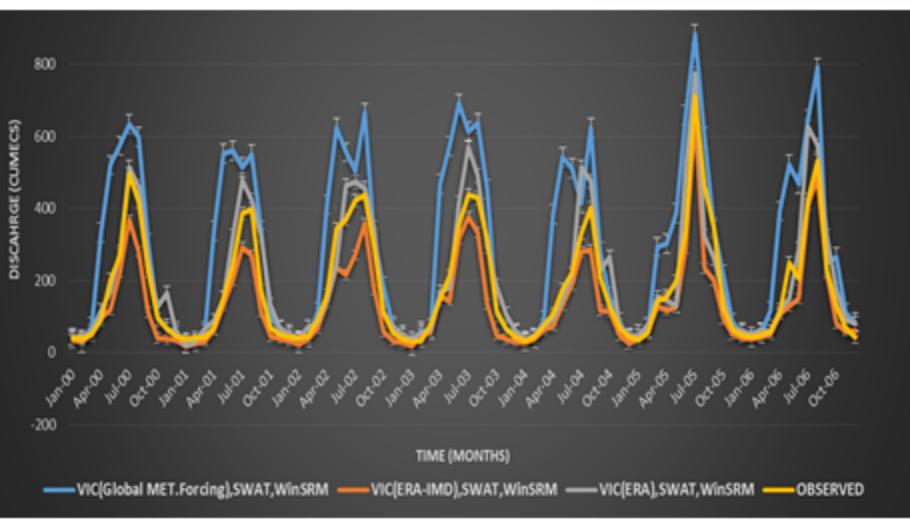
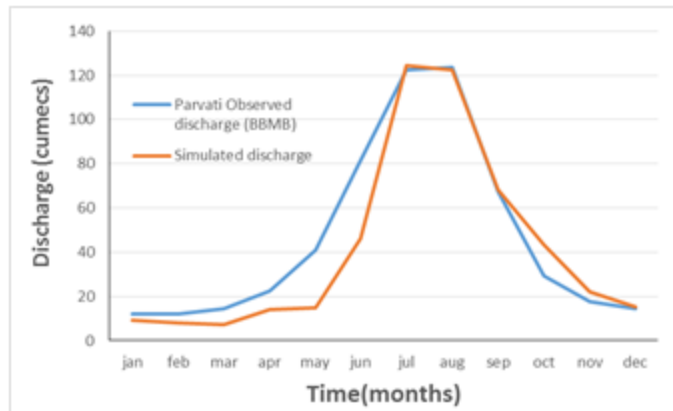
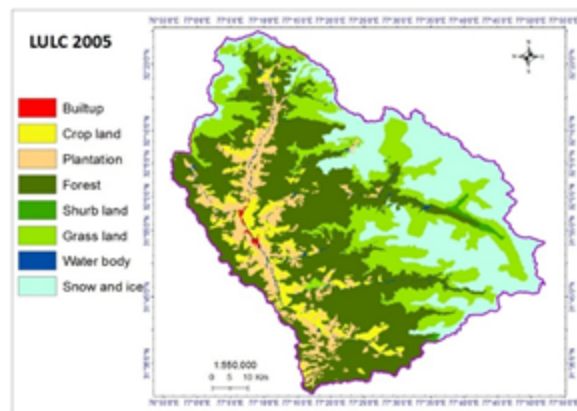
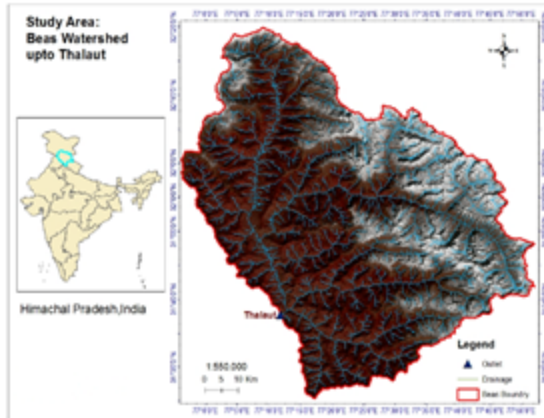


EOAM: Beas River basin ensemble hydrological modelling results



MODEL	R ²	RMSE	NSE
Ensemble discharge 1	0.80	167.78	-0.197
Ensemble discharge 2	0.92	66.66	0.81
Ensemble discharge 3	0.90	61.801	0.83
Final Ens. Dis.	0.936	50.55	0.89

Four different combinations has been tested and finally three selected for the weighted averaging modelling Technique depending upon the meteorological datasets used as follows.

- a) VIC- VIC GLOBAL MET.FORCING simulation, SWAT, WinSRM
- Ensemble 1) VIC-IMD simulation, SWAT, WinSRM
- Ensemble 2) VIC-ERA-INTERIM, SWAT, WinSRM
- Ensemble 3) VIC-ERA-IMD (rainfall), SWAT, WinSRM